

**ANNI**  
**ULSTER**  
**MUSEUM**



**MAP**

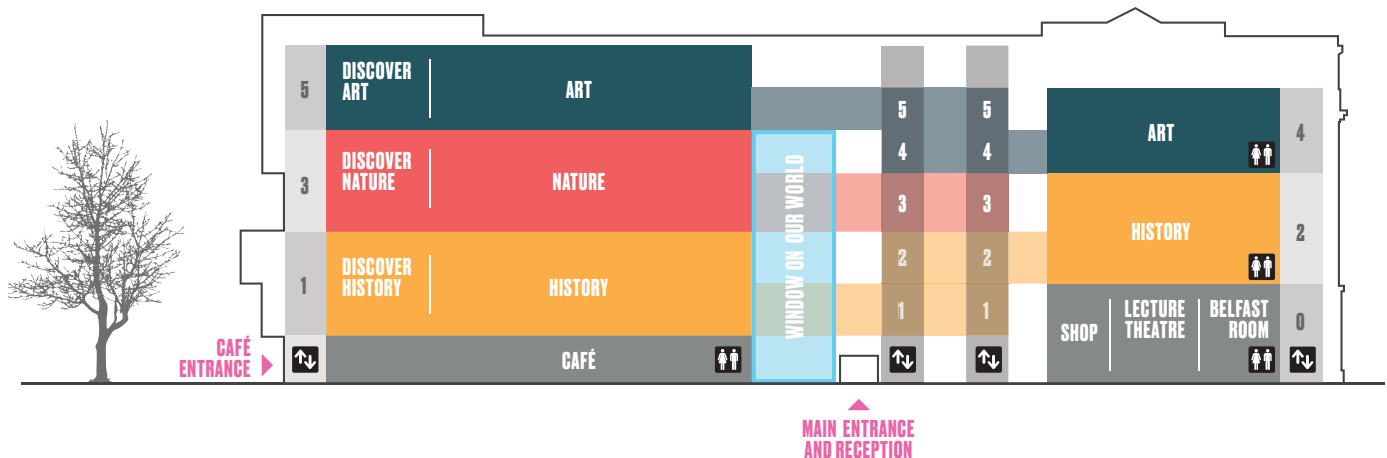
# WELCOME TO THE ULSTER MUSEUM

Explore Art, Nature and History in any order you like using the lifts near reception. The levels of the museum form a spiral – as you turn left, you will climb towards the art galleries, as you turn right, you will descend to reception. Our most accessible route starts on level 5 in the George and Angela Moore Gallery of Applied Art.

Open: 10:00 - 17:00, Tuesday-Sunday and Bank Holidays.

## Make the most of your visit

- Our friendly guides are here to help you get the most out of your visit and keep both you and the collections safe.
- Please don't use your flash when taking pictures. A small number of objects can't be photographed, look out for signs or ask a guide.
- Please don't touch the objects. We have lots of hands-on experiences in our Discovery Spaces, or marked in the galleries.
- No smoking or vaping in the building.
- No food or drink in the galleries please. Hungry? Visit our excellent Wynne & Pym café on level 0.
- Please keep an eye on your children.
- Respect other visitors' experiences.
- Breast feeding is welcome anywhere. We have a dedicated changing room for babies on level 0.



## ART

---

Encounter the very best of the national collections in our beautiful art galleries. You'll discover works from the 16th century to ultra-modern fashion and furniture, paintings, prints, sculpture and silverware. See featured exhibitions of work by local, national and international artists. Visit our website for details of exactly what will be on when you visit.

Take the lift to level 5.

## NATURE

---

Discover the wonders of the natural world and the origins of the earth in our natural science galleries. Gaze on beautiful crystals, amazing fossils and explore how nearly two billion years of geological history are preserved in the rocks of this island.

Take the lift to level 3.

## HISTORY

---

Journey through history as you go from Ulster's earliest people, through turbulent times of war and conflict to periods of peaceful development and progress. Our collection contains a wealth of fascinating artefacts from 10,000 years ago to the present day. Keep a look out for an ancient Egyptian mummy and a power loom from the world's largest linen producer.

Take the lift to levels 1 or 2.

## WINDOW ON OUR WORLD

---

Window on Our World rises three storeys through the centre of the building and houses the most impressive pieces from each of our collections. It's dominated by a replica of one of Ireland's most impressive Celtic Crosses and a cannon retrieved from the sunken ships of the Spanish Armada.

Walk up the ramp from reception or see into Window on Our World from the Modern History or Nature galleries.

## DISCOVERY SPACES

---

Experience our collections in a different way in our hands-on Discovery Spaces – Discover Art, Discover Nature and Discover History. They are the perfect places to create your own art, get up close to tiny creatures under a microscope, or make connections between the past and the present. Everyone's welcome!

Take the lift to levels 1, 3 or 5.

## RECEPTION

---

Find out what's happening today and meet our expert guides at the information desk in reception. Gather here for regular tours and see temporary displays showcasing all the museum has to offer.

Enter on level 0.

## BELFAST ROOM

---

The Belfast Room hosts regular temporary exhibitions developed in partnership with the community.

Enter on level 0.

**HISTORY**  
**WINDOW ON**  
**OUR WORLD**  
**CAFÉ**  
**SHOP**  
**BELFAST ROOM**

-  Information Desk
-  Toilet Facilities
-  Baby Changing
-  Cloak Room
-  Lifts
-  Stair Lift
-  Wheelchair Ramp
-  Shop
-  Café
-  Accessible, gender-neutral toilets
-  Snack Room

YOU ARE  
 HERE ▶



▲  
 MAIN  
 ENTRANCE



## SHOP

Find a carefully curated range of merchandise at the Ulster Museum shop. Explore our collections further by delving into the wide range of books, browse the best of local design talent or pick up the perfect gift. There's something for everyone!

Enter on level 0.



## CAFÉ

Hungry? You're in luck. At our Wynne & Pym café you'll find delicious savoury snacks, lunch-time meals and sweet treats along with specialty teas and fine espresso coffee. The café is named after the architects who designed our amazing building, 50 years apart.

Enter on level 0.



## THE TROUBLES & BEYOND

Explore the Troubles and Northern Ireland's continuing emergence from years of conflict in the context of wider social, economic, cultural and political influences. Learn more about the history of the conflict and its impact on everyday life, people and communities through a remarkable range of objects reflecting diverse perspectives and experiences. Many objects have been contributed directly by the public as part of the 'Collecting the Troubles and Beyond' project, supported by The National Lottery Heritage Fund.

Enter through [Window on Our World](#), level 0.



Lifts



Wheelchair Ramp



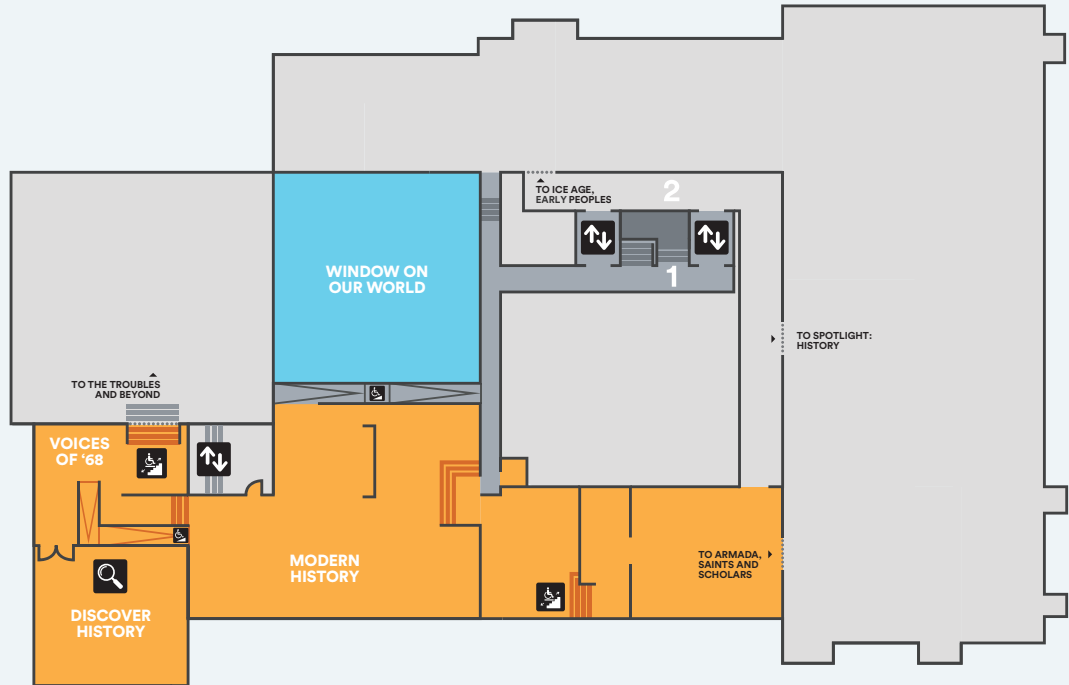
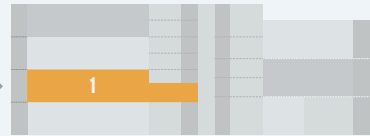
Stair Lift



Discovery Space

YOU ARE  
HERE

1



**HISTORY**  
**WINDOW ON**  
**OUR WORLD**





## DISCOVER HISTORY

The Discover History space offers a fun way to explore the Ulster Museum's history, archaeology and world cultures collections. Try reconstructing a prehistoric skull, take a selfie in period costume or find the largest shoe you've ever seen! A guide is on hand to answer any questions.

[Enter through Modern History, level 1.](#)



## MODERN HISTORY 1500 - 1968

Modern History is arranged around noteworthy events and themes telling the story of the historic province of Ulster from 1500 to 1968. Objects on display include the Dungiven costume, a rare 16th century garment recovered from a bog, and the sword of Henry Joy McCracken, prominent United Irishman hanged in 1798. Many of the objects are directly connected to key events and personalities from the past 500 years – from Hugh O'Neill and Arthur Chichester, to Isabella Tod and James Connolly.

[Enter on level 2. Wheelchair and buggy users can get easier access to most of the gallery from level 1.](#)

## VOICES OF

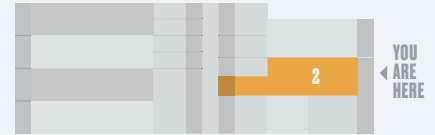


## VOICES OF 1968

This exhibition encourages a fresh look at a crucial period in Northern Ireland's history, told in the words of some of those directly involved at the time.

[Enter through Modern History, level 1.](#)

**HISTORY**  
**NATURE**  
**WINDOW ON**  
**OUR WORLD**







## EARLY PEOPLES

Journey back in time through our archaeology galleries, from Ireland's first settlers (around 8000 BC) to changes brought about by Neolithic farmers (around 4000 BC). Explore the Bronze Age (around 2300 BC), when the first gold and metal objects were forged. Then see objects from around 600 BC, the beginning of the Iron Age.

Enter on level 2.

## TAKABUTI

Take a glimpse at how people in Egypt lived thousands of years ago and learn about the life and death of Takabuti. Nearby, you'll find a child's wooden doll, hair combs, jewellery and cosmetic jars that were once in daily use.

Enter through Early Peoples, level 2.

## ARMADA

Stories of tragedy and treasure abound in this collection of international importance dedicated to the ill-fated Spanish Armada of 1588. The ships wrecked along the Irish coast include the Girona, laden with gold and personal wealth, and La Trinidad Valencera, bristling with weapons of war.

Enter from level 2 walkway.

## SAINTS & SCHOLARS

Discover how the spread of Christianity in Ireland (around AD 500) was accompanied by new writings and objects made for the church. Learn of Viking invaders and the end of medieval Gaelic Ireland (around AD 1600), marked by evidence of conflict.

Enter through Early Peoples, level 2.

## SPOTLIGHT: HISTORY

This gallery is for our temporary history exhibitions. These galleries allow us to focus on particular collections and subject areas in more detail. Visit reception, or check our website, to find out what's on.

Enter from level 2 walkway.



Lifts



Wheelchair Ramp



Stair Lift

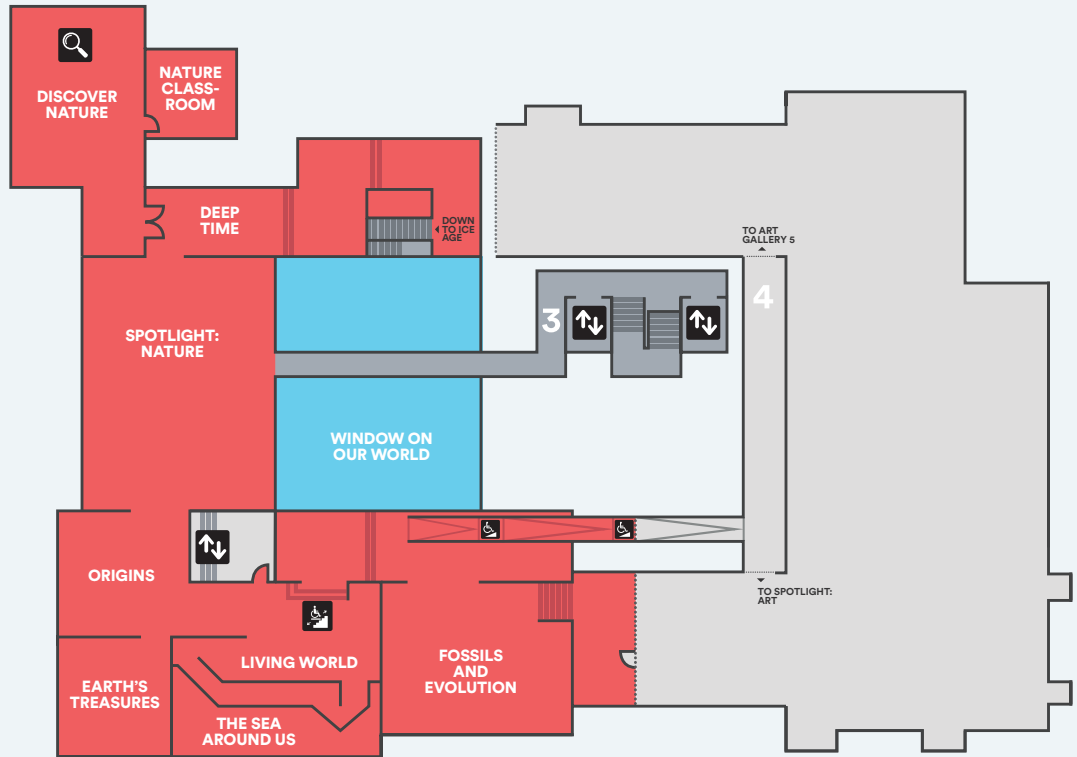


Discovery Space

YOU ARE  
HERE

3

# NATURE WINDOW ON OUR WORLD





## FOSSILS & EVOLUTION

Explore spectacular fossils from a 'graveyard' of tiny ammonite shells to a toothsome, four-metre long fish. See skulls of dwarf elephants and giant deer. Discover why your skeleton isn't that different from a monkey, a mouse or a mole.

Enter from level 4 walkway.

## LIVING WORLD

Learn more about life on Earth – both past and present. Explore fossil algae, the bizarre shells of ammonites and the alien forms of trilobites. See modern starfish, giant clams and an emperor penguin. Marvel at the coelacanth, a fish thought extinct until 1938, and the passenger pigeon, driven to extinction by 1914.

Enter on level 3.

## ORIGINS/EARTH'S TREASURES

Touch a fragment from a planet's core, formed at the dawn of our Solar System 4.5 billion years ago. Wonder at the variety of minerals and crystals found on Earth, and the UK's largest display of minerals that glow brilliantly under ultraviolet light.

Enter on level 3.



## DISCOVER NATURE

Explore the natural world from exotic shells, butterflies, fossils and minerals, to local animals and birds. Take a closer look at tiny insects under a microscope and get hands-on with some of the larger objects – you can even touch an elephant's tail!

Enter on level 3.

## SPOTLIGHT: NATURE


Our amazing collections include so many science specimens that we can only show a fraction of them at a time. This gallery hosts changing science displays from across the globe, and beyond.

Enter on level 3.

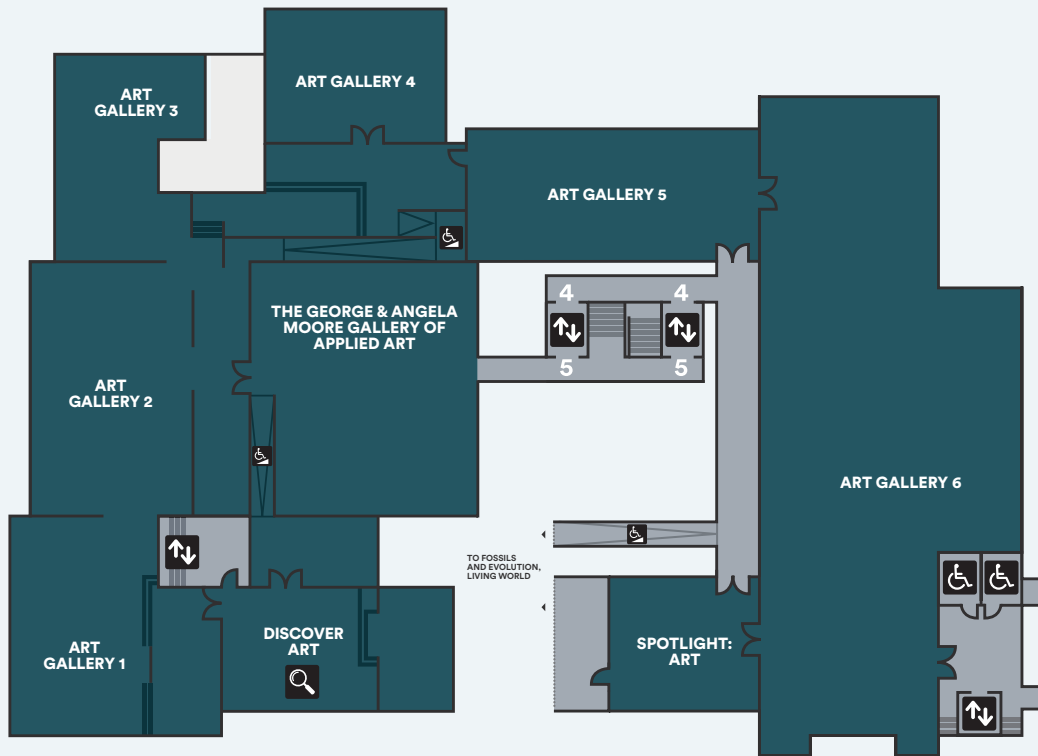
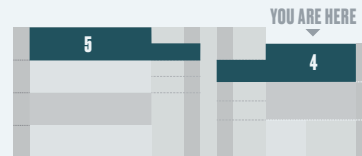
## DEEP TIME & ICE AGE

Take a stroll through time and discover Ireland's oldest rocks, ancient oceans, the age of dinosaurs and volcanic landscapes. Venture downstairs and into the Ice Ages.

Enter on level 3, through Spotlight: Nature.

-  Lifts
-  Wheelchair Ramp
-  Toilet Facilities

-  Accessible, gender neutral toilets
-  Discovery Space





## DISCOVER ART

This fun, hands-on space is a great place to exercise your artistic skills under the direction of our helpful guides. The activities draw on inspiration from current exhibitions to get you making your own creations. Perfect for kids and adults alike in a bright and airy room with views over the Botanic Gardens.

Enter on level 5.

## THE GEORGE & ANGELA MOORE GALLERY OF APPLIED ART

Applied Art is the application of artistic design to everyday objects. Our collections have two areas of particular strength - the 18th century and the contemporary. Highlights include Belleek and studio ceramics, Irish glass, silver, jewellery and sculptural artworks by international artists.

Enter on level 5.



## GALLERY 1 & GALLERY 2

These two spaces are for our own collections, with a focus on European and Irish Art before 1870, and special exhibitions.

Enter on level 5.

## GALLERY 3

This impressive gallery lends itself to the display of our renowned fashion collection.

Enter though the George & Angela Moore Gallery of Applied Art, level 5.



## GALLERY 4

This intimate space is well-suited to diverse and often delicate works on paper. Exhibitions of these works run for no longer than a year, because the materials are sensitive to light.

Enter on level 4.

## GALLERY 5

Irish Art after 1870 is at the centre of our collection, so we display it at the heart of our art galleries. Occasionally this space is used for temporary exhibitions.

Enter on level 4.

## GALLERY 6

The largest and most flexible of our art spaces. Here you can regularly view works from our 20th century and contemporary art collections. We also host a wide variety of temporary exhibitions in this impressive space.

Enter on level 4.

## SPOTLIGHT: ART

Here we highlight our own collections and occasional loans with 'in-focus' displays, looking at different artists, schools and themes.

Enter from level 4 walkway.

# ULSTER FOLK MUSEUM



**Step back in time and experience what life was like in Ulster over 100 years ago.**

The Ulster Folk Museum is an open-air, living history museum centred on the bustling market town of Ballycultra, filled with authentic buildings, each lovingly transported from their original settings. Watch a talkie at the picture house, send a letter at the post office, or treat yourself to some sweets from the corner shop.

People here live and dress just as their ancestors did. Meet a blacksmith working iron at the forge. Chat with the basket maker as you try your hand at weaving rushes, wicker or straw. Stroll into the countryside, where white-

washed farmhouses dot the rolling hills. You'll meet working animals like horses, donkeys and hens and get a taste of the hardships and joys of farming life.

## **Opening times:**

March to September,  
Tuesday to Sunday 10.00 - 17.00

October to February,  
Tuesday to Friday 10.00 - 16.00  
Saturday & Sunday 11.00 - 16.00

# ULSTER TRANSPORT MUSEUM



**Discover one of the most impressive transport collections in Europe, curated to tell the story of technological and social change in Ireland since the dawn of the modern era.**

You'll find powerful locomotives, horse-drawn carriages, vintage motorbikes and cars of all shapes and sizes. These precious vehicles map the journey of tenacious local people finding faster and more efficient ways to move. It is a well of inspiration for the designers, engineers and adventurers of the future.

Must-see exhibits include an original DeLorean car, built in Northern Ireland and made

famous by the Back to the Future trilogy, Maedb the most powerful steam locomotive ever to ply Ireland's tracks, and the Short SC1, an early vertical take-off fighter jet.

## **Opening times:**

March to September,  
Tuesday to Sunday 10.00 - 17.00

October to February,  
Tuesday to Friday 10.00 - 16.00  
Saturday & Sunday 11.00 - 16.00



# ULSTER AMERICAN FOLK PARK



Embark on an epic journey across the centuries and the vast Atlantic Ocean as you discover the story of Irish emigration. Discover the world of rural Ulster that the migrants left behind, the arduous journey they endured at sea and the colonial society that they joined in America.

Wander through the rural world of nineteenth century Ulster, carefully recreated in the original buildings that were moved brick-by-brick from

where they once stood. Take ship aboard the Brig Union, a close replica of a genuine migrant transport. Explore the New World and the inventive solutions that new arrivals developed to answer the challenges of living on the frontier.

Experience the past through hands-on activities such as flax spinning, barn dancing and traditional cooking. Watch blacksmiths and rope makers at work or sit in on a school lesson.

## Opening times:

March to June,  
Tuesday to Sunday 10.00 - 17.00

July & August,  
Daily 10.00 - 17.00

September,  
Tuesday to Sunday 10.00 - 17.00

October to February,  
Tuesday to Friday 10.00 - 16.00  
Saturday & Sunday 11.00 - 16.00



# SUPPORT YOUR MUSEUMS TODAY

Show your financial support and help us to care for our precious national heritage. Your contributions will go directly to preserving, restoring and exhibiting countless artefacts, artworks and photographs. We offer two main ways to support your museums:

## JOIN TODAY

As an annual member, you'll support your museums and receive some great benefits like free entrance to the Ulster Folk Museum, the Ulster Transport Museum and the Ulster American Folk Park. You'll also receive discounts at our shops and tea rooms.

To learn more about becoming a member, or donating to your museum, visit our website at [nmni.com/get-involved](https://nmni.com/get-involved).

## PLEASE DONATE

Your donations keep the Ulster Museum free for everyone. They fund our work to share its treasures with schools, young people, older people and people who wouldn't otherwise get a chance to visit.

All of your donations attract Gift Aid, the government's tax relief for charitable organisations, allowing us to claim an extra 25p for every £1 you give.