

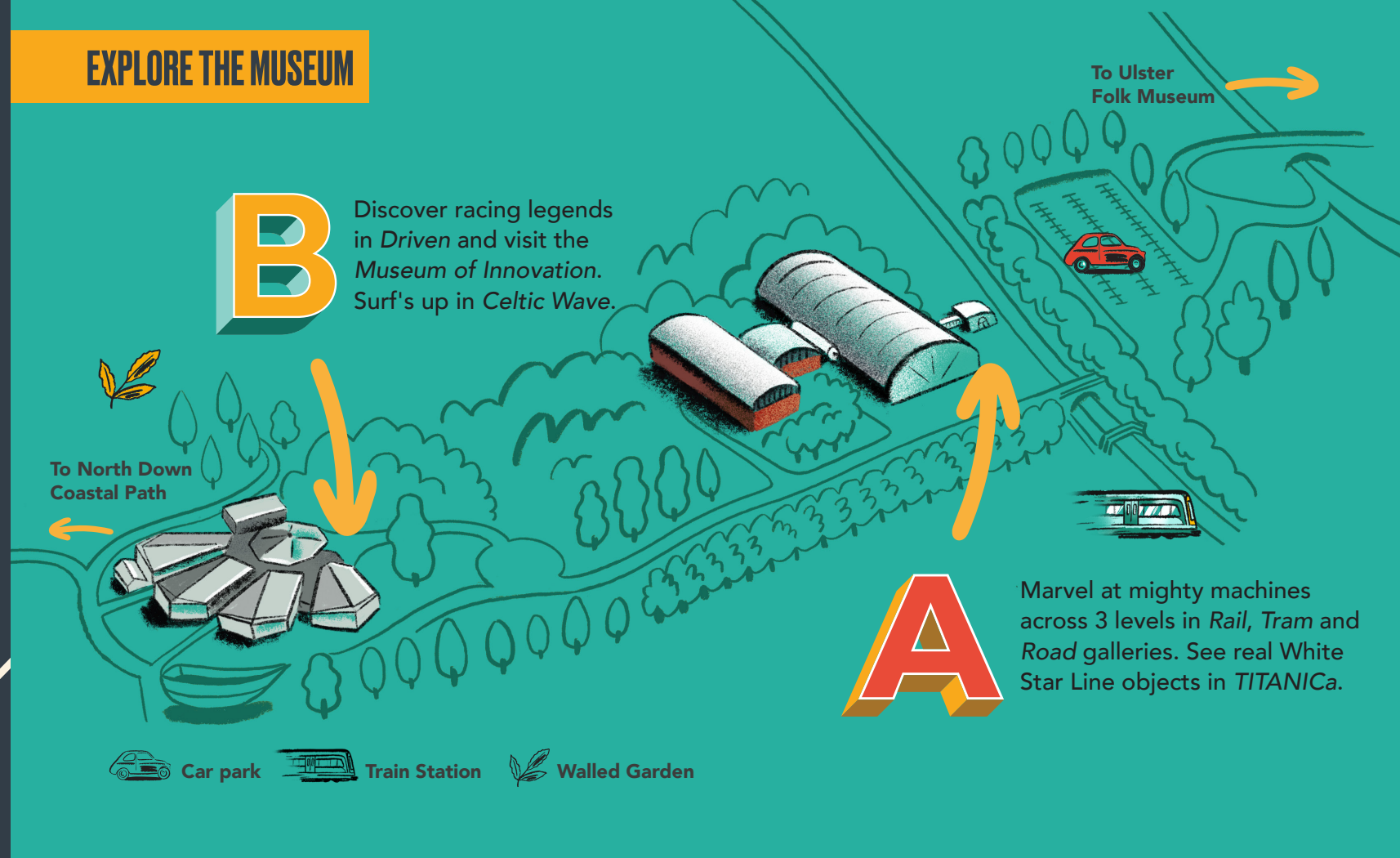
ULSTER TRANSPORT MUSEUM



VISITOR GUIDE



EXPLORE THE MUSEUM



GET AROUND

The Museum is spread across two sets of buildings and beautiful grounds. Don't miss B Galleries, down the hill!



Mobility aids available, ask at Ticket Desk.



Tearoom in A Galleries (closed weekdays). Indoor Picnic Area in B Galleries. Vending machines available. Please do not eat or drink outside these areas.



Dogs are welcome in the grounds. They must be kept on a short lead at all times and cannot enter any of our buildings (except assistance dogs).



ULSTER TRANSPORT MUSEUM

DON'T MISS



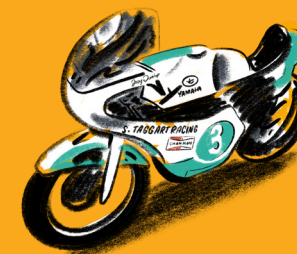
A MAEDB

Built in 1939, one of a class of three locomotives; the most powerful engines ever used on Ireland's railways!



B DELOREAN DMC 12 ENDURANCE

Made famous by the Back to the Future films, don't miss this testing car for the Belfast-built vehicle.



B JOEY DUNLOP'S MOTORBIKE

A Yamaha TZ250E raced by one of the most famous motorcyclists from Northern Ireland.



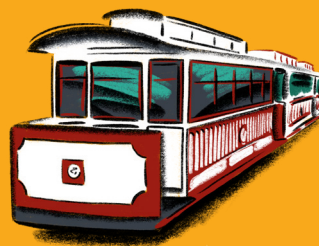
B AL MENNIE'S SURFBOARD

Replica of board used by big wave surfer Al Mennie on the west coast of Ireland to conquer monster waves!



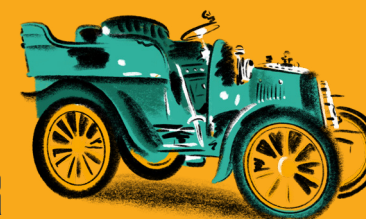
A TITANICA GALLERY

Discover the story of Titanic, the most famous ship in the world, built in Belfast.



A CAUSEWAY TRAM

The first hydroelectric tramway in the world! Transported visitors from Portrush to the Giant's Causeway.



A MMC CAR

The MMC (Motor Manufacturing Company) is the oldest car in our collection, built over one hundred years ago in 1903.



B FERGUSON BLACK TRACTOR

Arguably the most famous tractor in the world! The first with the Ferguson System, it revolutionised tractor design and farming.

A

Journey through our buildings and discover our RAIL, TRAM and ROAD galleries and so much more.

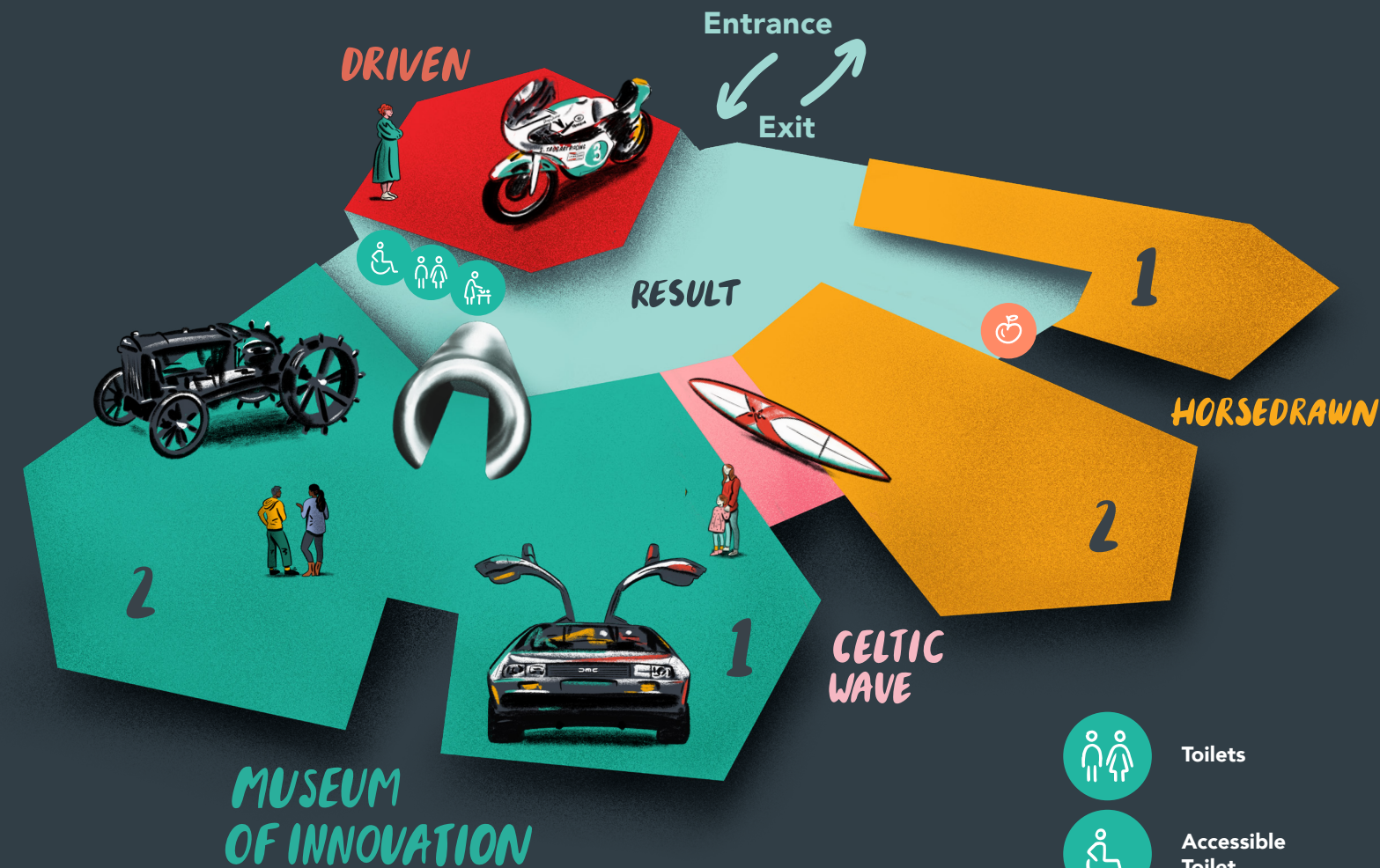
EXPLORE A GALLERIES



B

Discover racing legends in **DRIVEN** and visit the **MUSEUM OF INNOVATION**. Surf's up in **CELTIC WAVE**.

EXPLORE B GALLERIES



ULSTER TRANSPORT MUSEUM

- Toilets
- Accessible Toilet
- Baby Changing
- Shop
- Picnic Area
- Tearoom